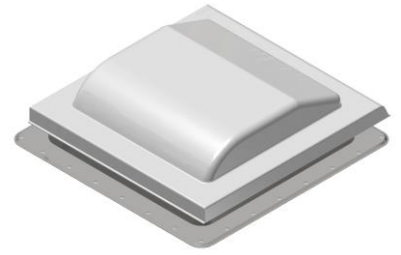


Universal Vent Lid - Installation Instructions

Part No.: A10-3375 (White), A10-3376 (Smoke)

(The preinstalled bracket fits the most common lift mechanisms. If your existing lift mechanism is not compatible with the preinstalled bracket, see STEP 2.)



STEP 1: Begin from inside the RV

- Remove the crank handle or knob by removing the screw securing it.
- Remove the screen, which may be fastened by screws, clips, or tabs.
- Remove the screws that secure the crank mechanism to the vent frame bracket and remove the clip(s) securing the lift arm to the lid bracket(s), if equipped. The metal clips do not need to be re-installed.
- Shift the crank mechanism front or back and move the lift arm up or down to remove it from the bracket on the lid (use the crank or knob to move the lift arm up or down if needed).

STEP 2: Move to the top of the RV

- Open up the lid and free it from the frame. Valterra's lid has various bracket mounting points to match Maxx Air®, Fan-Tastic Vent™, Comfort Air™, and others. Match the bracket location to the existing position. Re-use brackets when necessary by removing from your old lid and attaching to your Valterra Universal Lid.
- Place the new lid over the vent opening and visually center it from side to side. To align the lid front to back, place the lid so that the spacers on the inside of the lid touch the outside of the frame and gasket (FIG. 1).
- Hold the side hinge bracket in a horizontal position relative to the bottom of the vent lid and use a permanent marker to mark drilling holes on the vent seal flange.
- Use a center punch and a 7/64" or smaller drill bit to drill 2 pilot holes on each side (4 total).
- Attach the brackets to the vent seal frame using the self tapping screws provided.
- You may now remove the foam spacers from the inside of the lid once it has been secured.

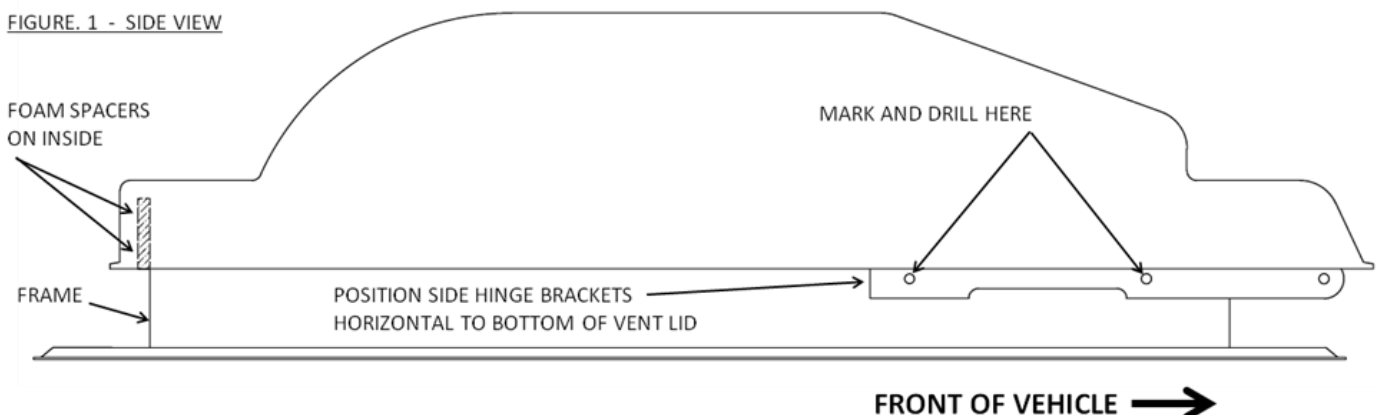
NOTE: Some lids have a channel type track slider. If this is the case, you will need to remove the sheet metal bracket and attach the supplied plastic track. Position the track such that it lines up with the center of the cover. All other steps are the same.



STEP 3: Finish from inside the RV

- Slide the crank mechanism lift arm through the vent frame bracket and attach it to the vent lid bracket. Shift the crank mechanism front or back and move lift arm up or down to assist with attaching.
- Align the holes of the crank mechanism to the vent frame bracket and re-install screws.
- Attach the screen. Then attach the crank handle or knob after the screen is secure.

FIGURE 1 - SIDE VIEW



Limited Warranty

Valterra Products, LLC warrants this product to be free from defects in materials or workmanship for the life of product to the original owner. In the event of a defect, contact Valterra Products, LLC at 800-806-6159 for repair assistance or return authorization. Repair or replacement will be made without charge and is at the discretion of Valterra Products, LLC. This Warranty does not cover damages caused by normal wear and tear, misuse, improper handling, installation, or unauthorized maintenance or repair. Liability for consequential damages under any and all warranties are excluded to the extent such exclusion is permitted by law. Some states do not allow exclusion or limitation and exclusion may not apply to you. This warranty gives you specific legal rights, and you may also have other rights which vary from state to state.

Valterra Products, LLC
Mission Hills, CA 91346
1.800.806.6159
www.valterra.com